



# 山东德泰机械制造集团

Shandong Detai Machinery Group Co., Ltd.

## 企业社会责任报告

CSR REPORT



# 1、公司背景

## Background



●山东德泰机械制造集团有限公司位于山东省新泰市，公司成立于1992年，是一生产中、重型卡车底盘铸锻件的专业厂家。厂区占地面积135000平方米，其中建筑面积99500平方米，生产面积88500平方米。现有员工630人。

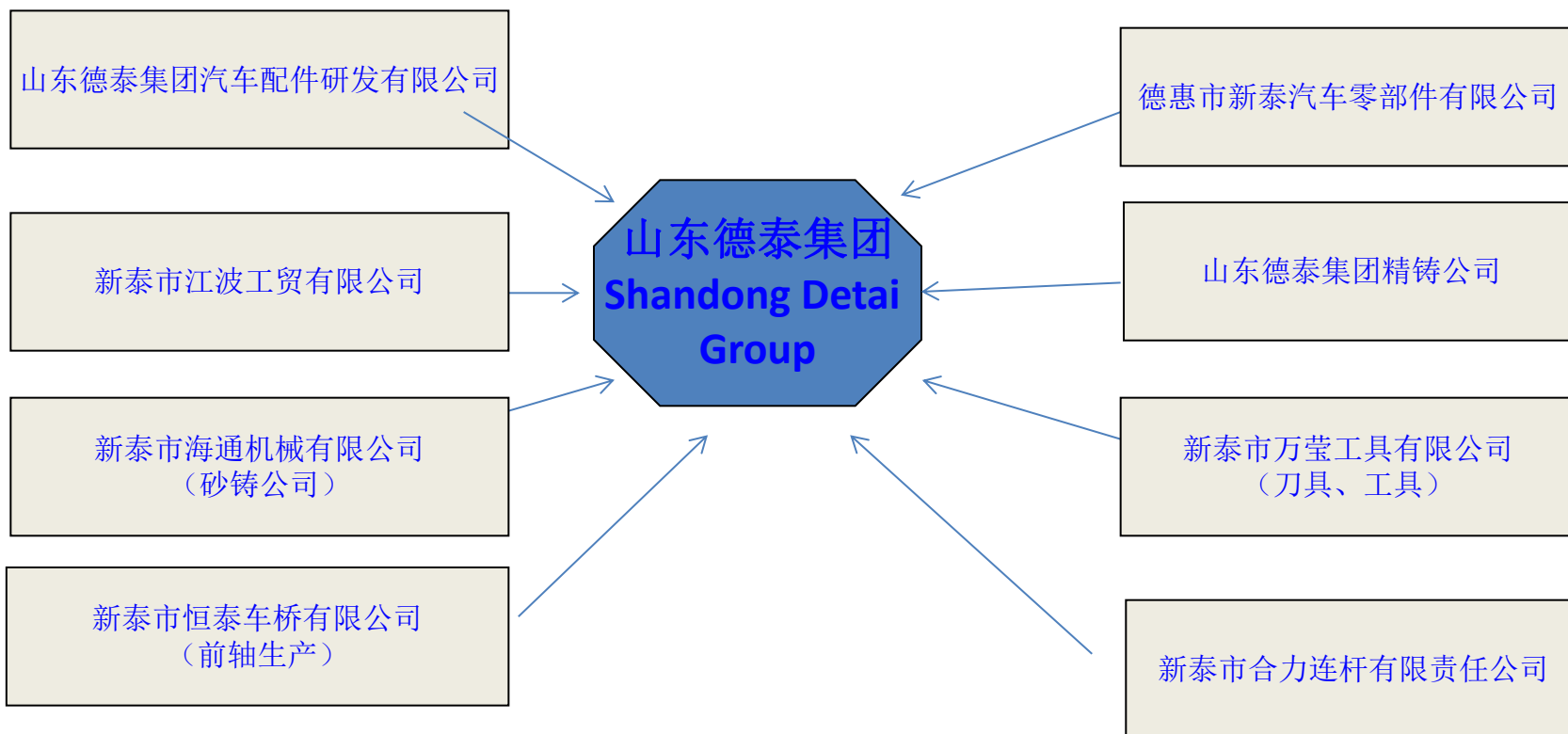
Shandong Detai Machinery Group Co., Ltd. is located in Xintai City Shandong Province, The company was founded in 1992, That is a production of medium and heavy truck chassis forging professional manufacturers. It covers an area of 135,000 square meters, including construction area 99, 500 square meters, 88, 500 square meters of production area. So far, there are 630 employees in our company.



山东德泰

## 2、公司构成

Company constitute



# 3、营销网络

## Sales Network

●主导产品有：汽车前轴及总成、转向节、发动机连杆、转向臂、转向过渡臂总成、横直拉杆总成、板簧吊耳及汽车悬挂件产品等。公司在全国各地设有多个办事机构，拥有专业销售人员24人。

Leading products include: automotive front axle and assembly, steering knuckles, engine connecting rods, steering arms, transition arm assembly, straight horizontal rod assembly, the leaf spring suspension lug and automotive products and so on. Our Company has a number of offices and professional sales staff of 24 people throughout the country.

- 北京办事处 Beijing Office
- 济南办事处 Jinan Office
- 青岛办事处 Qingdao Office
- 长春办事处 Changchun Office
- 西安办事处 Xi'an office
- 成都办事处 Chengdu Office
- 马鞍山办事处 Ma'anshan Office
- 包头办事处 Baotou Office



## 4、合作伙伴 Partners

●主导产品已与中国一汽集团、二汽集团、中国重汽、陕西重汽、青岛汽车厂、北汽欧曼、北汽福田、包头北方奔驰、集瑞联合重工、成都汽车厂、南京跃进、安徽华菱、安凯车桥、山西大运等全国中重卡、轻卡等制造厂家结为永久性合作伙伴关系

Our company has become a permanent partnership with China FAW Group, the Second Automobile Group, China National Heavy Duty Truck Group, Shanxi Heavy Truck, Qingdao Aoto Factory, Beijing Auto Auman, Beiqi Foton, Baotou North-Benz, C&C Trucks, Chengdu Auto Factory, Nanjing Yuejin, Anhui Valin, Ankai Axel, Shanxi Dayun, and other heavy truck, light truck manufacturers in China.



# 5、经营方针

## Business approach

- 企业理念：  
奉献社会、  
人才第一、  
持续创新、  
合理追求。
- 质量方针：“千锤锻质量，百炼铸信誉，让客户满意是德泰人永恒的追求。”
- Philosophy:  
Contribute to society,  
Talent first,  
Continue to innovation,  
Reasonable pursuit.
- Quality: We have thousands of forging quality and casting credibility, so that customer satisfaction is the eternal pursuit of Detai People.





# 6、主营产品 Main Product

载重汽车转向配件  
Truck Steering Parts



载重汽车前轴总成  
Truck axle assembly



载重汽车底盘配件  
Truck chassis parts



发动机连杆  
Engine connecting rod



载重汽车前后桥配件  
Front and rear axle truck accessories



汽车悬挂配件  
Automotive Suspension Parts

## 6、主营产品

### Main Product

#### 6.1 载重汽车底盘配件

Truck chassis parts



山东德泰



## 6、主营产品 Main Product

### 6.1 载重汽车底盘配件

Truck chassis parts



## 6、主营产品 Main Product

### 6.1 载重汽车底盘配件

Truck chassis parts



山东德泰

## 6、主营产品 Main Product

### 6.2载重汽车转向配件

Truck Steering Parts



## 6、主营产品 Main Product

### ●6. 3载重汽车前轴总成

Truck axle assembly



## 6、主营产品 Main Product

### ●6.4发动机连杆

Engine connecting rod



## 6、主营产品 Main Product

### 6.5载重汽车前后桥配件

Front and rear axle truck accessories





# 6、主营产品

## Main Product

### 6.5载重汽车前后桥配件

Front and rear axle truck accessories



## 6、主营产品 Main Product

### 6.5载重汽车前后桥配件

Front and rear axle truck accessories



# 7、生产设备

## Production equipment



拥有630T/1000T/1600T/2500T/8000T热模锻生产线8条

We have 630T / 1000T / 1600T / 2500T / 8000T eight hot forging production lines



山东德泰



# 7、生产设备

## Production equipment



山东德泰

自动化前轴组装生产线  
Automatic front axle assembly line

# 7、生产设备

## Production equipment



加工中心  
Machining Center



机加工生产线  
Machining production line



端面磨床  
Double-face grinder



荧光磁粉探伤机  
Fluorescent magnetic particle  
inspection machine



山东德泰



# 7、生产设备

## Production equipment



模具制造设备  
Mold manufacturing equipment



连续式热处理生产线  
Continuous heat treatment production line



山东德泰



# 7、生产设备

## Production equipment



覆膜砂生产线，日产砂量20T  
Coated sand production line, 20T/Per day



拥有500Kg/1T/2T熔炼炉5台，日产能达到12吨  
We have 500KG/1T/2T five sets of smelting furnaces, with 12T/Per day



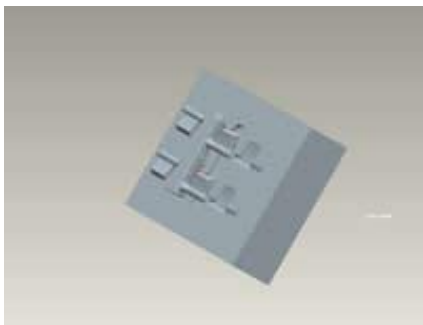
拥有立式/卧式 制芯制壳设备16台  
We have 16 sets of vertical / horizontal core-shell system equipment



山东德泰

# 8、铸造工艺过程

## Casting Process



(1) 模具设计  
Mold Design



(2) 模具制造  
Mold Manufacturing



(3) 型壳、芯型制作  
Shell, core production



(4) 型壳、芯型喷涂料  
Shell, core spray paint



(5) 熔炼  
Melting



(6) 炉前化验  
Front laboratory



# 8、铸造工艺过程

## Casting Process



(7) 浇注  
Pouring



(8) 震壳  
Shell Shock



(9) 切浇口  
Cut Gate



(10) 清砂  
Sand



(11) 热处理  
Heat Treatment



(12) 检验  
Test

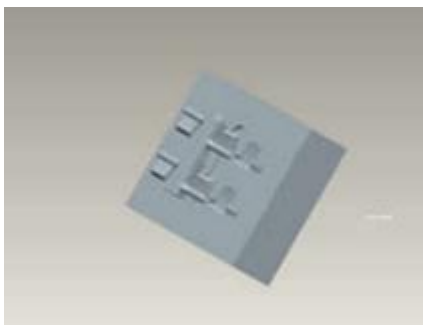


# 8、锻造工艺过程

## Casting Process

一、毛坯制造过程工艺（点击后面的PDF文档打开相应工艺文件）

Blank manufacturing process technology (click on the back of the PDF document to open the corresponding process file)



模具设计  
Mold Design



模具制造  
Mold Manufacturing



原材料入库  
Raw Material Storage



下料（棒料剪切机）  
Cutting (bar shear)



棒料加热（中频透热炉）  
Bar Heating (frequency  
diathermy furnace)



棒料变形（空气锤）  
Bar Deformation (air hammer)





# 8、锻造工艺过程 Casting Process

(点击后面的PDF文档打开相应工艺文件)

(Click on the back of the PDF document to open the corresponding process file)



Adobe Acrobat  
7.0 Document

预锻、终锻（摩擦压力机）  
Pre-forging, the final forging  
(friction press)



Adobe Acrobat  
7.0 Document

切边（冲床）  
Trimming (Punch)



Adobe Acrobat  
7.0 Document

校形（摩擦压力机）  
Shaping (friction press)



Adobe Acrobat  
7.0 Document

调质（连续式调质线）  
Quenched and tempered  
(continuous tone quality line)



Adobe Acrobat  
7.0 Document

清砂（清砂机）  
Sand (sand machine)



Adobe Acrobat  
7.0 Document

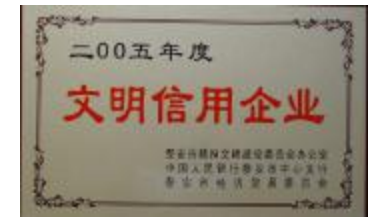
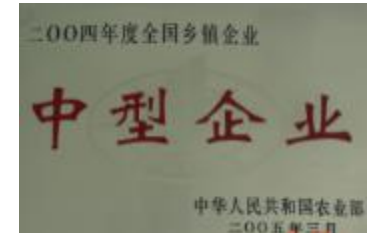
探伤（磁粉探伤机）  
Testing (magnetic particle  
inspection machine)



山东德泰

# 9、企业荣誉 Honors

- 全国高新技术企业  
National High-Tech Enterprises
- 中国诚信示范单位  
China Integrity Demonstration Units
- 劳动关系和谐企业  
Labor Relations Harmonious Enterprises
- 中型企业  
Medium Enterprises
- 文明诚信民营企业  
Civilized Integrity Of Private Enterprises





# 10、部分专利

## Part of the patent



# 11、质量体系 Quality System

公司一贯注重产品质量的制度化、规范化、科学化管理，通过了汽车行业TS16949质量管理体系认证

The company has always focused on the quality of the product institutionalized, standardized and scientific management. We passed the TS16949 automotive quality management system certification.



# 12、检测中心

## Testing Center

结合公司产品特点，建立计量室、三坐标室、理化室、性能测试室、以及综合试验室。

Combined with the company product features, we build metering chamber, metrology room, physics and chemistry room, performance testing room, and integrated laboratory.

### ● 计量室

#### Metering chamber



# 12、检测中心

## Testing Center

- 三坐标室

Metrology room



山东德泰



# 12、检测中心

## Testing Center

### ●理化室

Physical and chemical room



山东德泰

# 12、检测中心

## Testing Center

- 性能分析室

Performance analysis chamber



山东德泰



# 13、技术中心 Technology Center

我公司具有省级研发中心资质，多年来与一汽、重汽、北汽福田、江淮汽车等厂家合作开发很多产品，得到众多厂家的好评，并连续获得“改善提案奖”、“质量改进奖”、“特殊贡献奖”等荣誉称号。

近年来，技术中心采用公司外部引进、聘请，公司内部选拔、培养的方式，将技术中心规模不断扩大。在软件方面，先后引进了铸造过程模拟分析软件（CASTSoft），锻造过程模拟分析软件（DEFORM），有限元分析软件（HyperMesh）等引领技术潮流的辅助设计及制造软件，为产品的改善工作提供了很大的帮助。

My company has a provincial research and development center qualification, many years of cooperation with FAW, Heavy truck, Beiqi Foton, JAC and other manufacturers to develop a lot of products. Many manufacturers have been well received. And we continuously "Improvement Award", "Quality Improvement Award" and "Special Contribution Award".

In recent years, the company introduced an external technical center, hiring, internal selection, training mode. The technology center will have been expanding. In terms of software, we have introduced a casting process simulation software (CASTSoft), forging process simulation software (DEFORM), finite element analysis software (HyperMesh) and other leading technology trend-aided design and manufacturing software. That provides a great help with improving products.



# 13、技术中心 Technology Center

## ●研发手段

一、计算机辅助设计 (CAD)，产品从结构设计，工程制图均采用CAD。

二、计算机性能分析 (CAE)，产品结构分析使用CAE软件优化改善。

三、计算机加工编程 (CAM)，产品的生产制造过程采用CAE编程制造。

四、利用锻造过程模拟分析软件 (DEFORM)，利用铸造过程模拟分析软件 (CASTSoft) 对锻造、铸造过程进行模拟分析，提高模具设计，缩短产品研发周期，降低了生产成本。

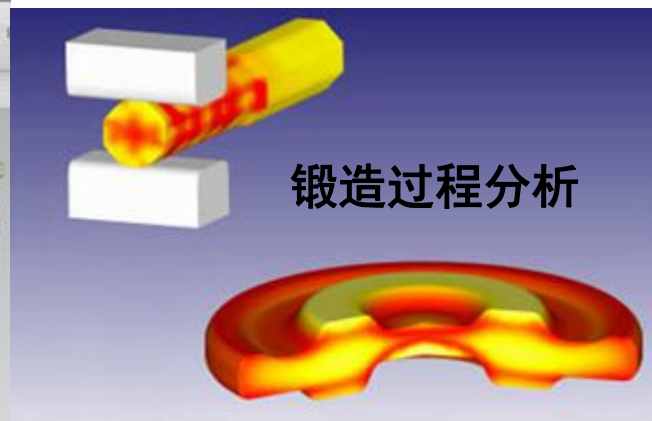
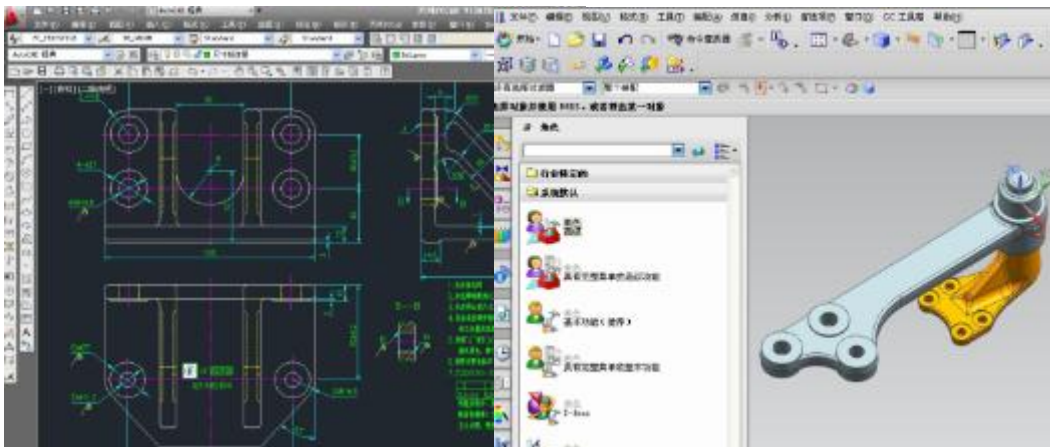
Research and development means

First, computer-aided design (CAD), Product structure design, engineering drawing are using CAD.

Second, the computer performance analysis (CAE), product design analysis software to optimize the use of CAE to improve.

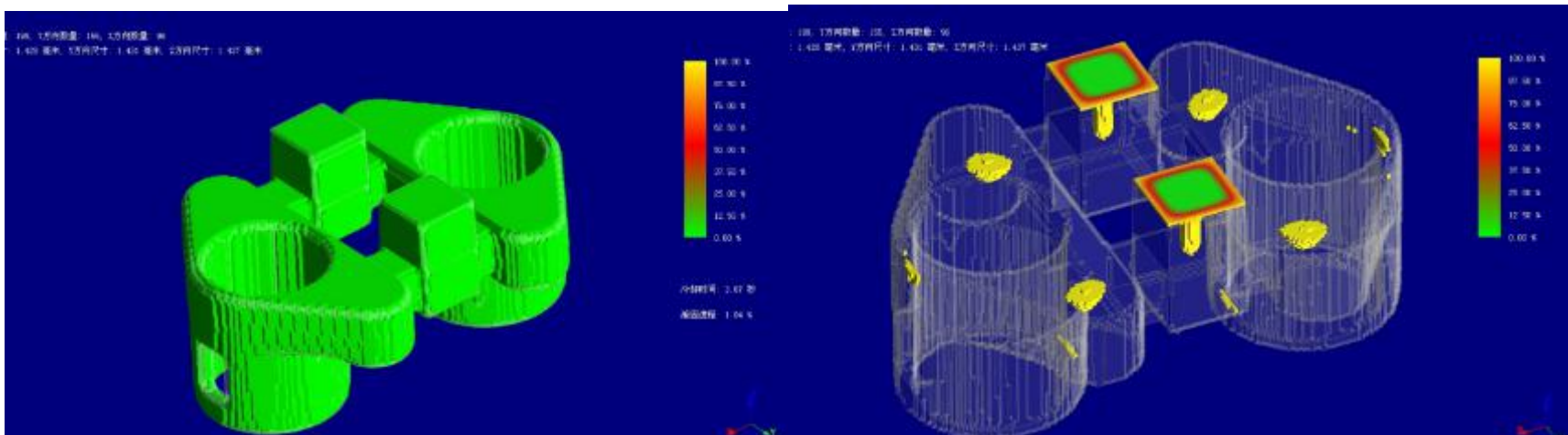
Third, the computer processing program (CAM), the manufacturing process of products manufactured using the CAE program.

Fourth, the use of the forging process simulation software (DEFORM), the use of casting process simulation software (CASTSoft) for forging, casting process simulation analysis, improve the mold design and shorten product development cycles, reduced production costs.

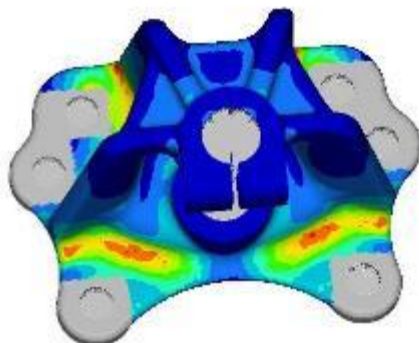
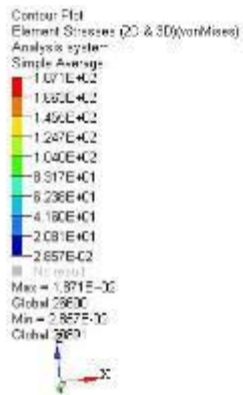


山东德泰

# 13、技术中心 Technology Center



## 铸造过程分析



C:\Users\Administrator\Desktop\14280810201 AQ\M4280810201 AQzhqan\file1.h3d  
Res.F: C:\Users\Administrator\Desktop\14280810201 AQ\M4280810201 AQzhqan\file1.h3d  
Subcase 1 (base) Elastic Analysis  
Frame 4

## CAE分析

# 设备清单

## ●主要生产设备

序号	设备名称	设备型号	数量	购入时间	设备状态
1	摩擦压力机	8000KN	1	2010	完好
2	摩擦压力机	2500KN	2	2008	完好
3	摩擦压力机	1600/1000/630 KN	共6	2002	完好
4	调质生产线	ICW69-800	2	2008/2012	完好
5	喷涂生产线	DT120-26	1	2010	完好
6	加工中心	VDL1000 VD1060	22	2010	完好
7	数控车床	CK6140 CK6150 6180	32	2008/2010	完好
8	数控钻床	ZK6140 6150 6180	12	2008/2010	完好
9	高精度磨床	MA1432-H	2	2006	完好
10	覆膜砂生产线	DT1000-26	1	2012	完好
11	覆膜砂制壳机		12	2010	完好
12	前轴组装生产线		1	2013	完好
14	转向节生产线		1	2010	完好



# 设备清单

## ●主要检测设备

序号	设备名称	设备型号	数量	购入时间	检定日期	检验项目	设备状态
1	拉力试验机	60T	1	2008	2013	性能检测	完好
2	直读光谱仪	DF-100	2	2010	2013	材料化学成分检测	完好
3	万能工具显微镜	19JC	1	2005	2013	长度尺寸检测	完好
4	烟雾试验箱	KN-90	1	2012	2013	漆膜耐腐蚀检测	完好
5	三坐标测量仪	EXplover081206	1	2011	2013	长度、形位尺寸检测	完好
6	磁粉探伤机	CEW-2000A	4	2007	2013	表面缺陷检测	完好
7	金相分析显微镜	4XB	2	2009	2013	金相组织检测	完好
8	数字式覆层测厚仪	TT220	2	2010	2013	漆膜厚度检测	完好
9	表面粗糙度仪	TR240	1	2010	2013	粗糙度检测	完好
10	洛氏硬度计	HR-150A	2	2008	2013	洛氏硬度检测	完好
11	布氏硬度计	HB3000A	2	2008	2013	布氏硬度检测	完好

